

- 1
- 2
- 3
- 4
- 5
- 6
- 7
- 8
- 9
- 10
- 11
- 12
- 13
- 14
- 15
- 16
- 17
- 18

## MATERIAL

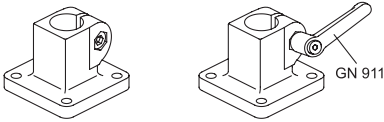
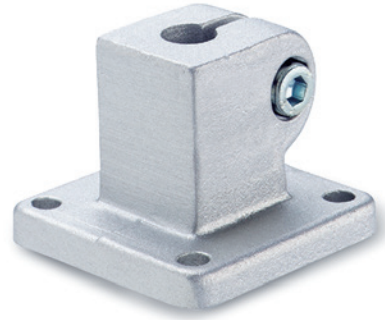
Aluminium, matte finish.  
AISI 304 stainless steel screws and nuts.

## STANDARD EXECUTIONS

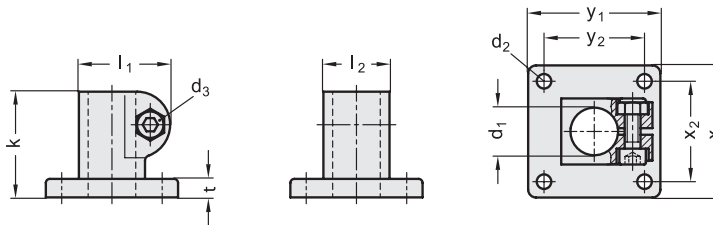
Surface finish index:  
- **BL**: natural colour.  
- **SW**: epoxy resin coating resistant to UV rays, RAL 9005 black colour.

## FEATURES AND APPLICATIONS

The assembly hole of GN 162 connecting clamps allows an excellent match with tubes GN 990 (see page 1368).  
The clamping screw d3 may be replaced by clamping kit GN 911 (see page 1372).



Conversion Table	
1 mm = 0.039 inch	
d1	
mm	inch
10	0.39
12	0.47
14	0.55
15	0.59
16	0.63
18	0.71



Code BL	Code SW	Description	d1	d2	d3	k	l1	l2	t	x1	x2	y1	y2	d3 Clamping kit	⚖
GN.48011	GN.48016	GN 162-B10-2-*	10	5.5	M6	40	34.5	25	7	50	38	50	38	GN 911-M6-22	97
GN.48031	GN.48036	GN 162-B12-2-*	12	5.5	M6	40	34.5	25	7	50	38	50	38	GN 911-M6-22	93
GN.48051	GN.48056	GN 162-B14-2-*	14	5.5	M6	40	34.5	25	7	50	38	50	38	GN 911-M6-22	89
GN.48071	GN.48076	GN 162-B15-2-*	15	5.5	M6	40	34.5	25	7	50	38	50	38	GN 911-M6-22	87
GN.48091	GN.48096	GN 162-B16-2-*	16	5.5	M6	40	34.5	25	7	50	38	50	38	GN 911-M6-22	85
GN.48111	GN.48116	GN 162-B18-2-*	18	5.5	M6	40	34.5	25	7	50	38	50	38	GN 911-M6-22	80

2 \* Complete the description of the standard item needed by adding the finish of the connector clamps: BL (blank) or SW (black).